

*Solidus*



# Index

|   |    |
|---|----|
| <b>Presentation</b>                             | 2  |
| <b>Prior Experiences</b>                        | 3  |
| <b>Organisation</b>                             | 4  |
| <b>Our offices</b>                              | 5  |
| <b>Areas of expertise</b>                       | 6  |
| <b>Key Projects</b>                             |    |
| Bridges & Viaducts                              | 7  |
| Oil & Gas                                       | 13 |
| Harbours & Docks                                | 14 |
| Hydraulic Structures                            | 18 |
| Tunnels   | 19 |
| Inspection & Rehabilitation                     | 20 |
| Patents & Research                              | 26 |
| <b>Certifications, Awards and Press Release</b> | 29 |





## Company Profile

Operative since over a decade in some of Italy's and the world's most prominent construction site, Solidus is a highly specialized Engineering firm which has been supplying key services to the building sector in a growing and innovative sphere of methods and solutions.

The group, led by chief engineer Francesco Del Tosto, operates mainly in the field of particularly complex structures such as Bridges, Viaducts, Tunnels, Harbours, Oil & Gas and Off-shore Platforms, as well as various types of different structures. Preliminary and technical designs take place directly within the company, whereas the construction phases take form through the joint venture with some among the world's most qualified companies in the construction sector.

The company's competences take root in partners Del Tosto's and Tucci's lifelong experiences in the sector, as well as on a trusted staff of younger professionals and consultants. The organisation is such that flexibility and experimentation, along with an ISO-9001 system quality certification under international regulations, allow for the company's ability to cover a diverse array of competences in multi-disciplinary fields of application from the level of mere Consultants to that of General Contractors delivering state-of-the-art turnkey products.

In fewer words, based on the client's needs we find the best allocation for our highly qualified resources.

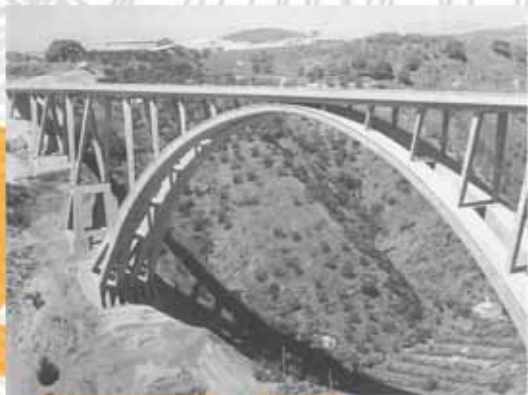
## Mission

Innovative design and building technique are at the heart of Solidus' *modus operandi*. Our philosophy is reflected by several experimental project participations and patented inventions, as well as the use of vanguard materials from the chemical and construction supply industries. The final goal is to contribute to a scientifically updated, environmentally compatible and structurally optimized concept of design and construction, the two pillars of the Engineering discipline.



## Prior Experiences

Solidus srl. was founded through the joint effort of partners Francesco Del Tosto and Romano Tucci in complementing their experiences matured over numerous decades in the field of civil engineering infrastructures.



Overpass above the Fiumarella,

Catanzaro, Italy,  
1960 - '61



Overpass connecting the  
Ostiense bypass,

Rome, Italy,  
2009



Bridge over the  
Columbia River,

British Columbia,  
Canada,  
1960



Bridge over the  
Po River,

Piacenza, Italy,  
2009



Bridge over the  
Wadi el Kuff,

Cirenaica, Libya,  
1965 - '71



Bridge over the  
Palidoro River,

Palidoro, Italy,  
2004



Romano Tucci (left),  
and eng. Riccardo  
Morandi (right), for  
whom he had  
served a long-time  
collaboration.

1965 ca.



Romano Tucci (left),  
and eng. Francesco  
Del Tosto (right),  
co-founders of  
Solidus srl.

2010

**Solidus**

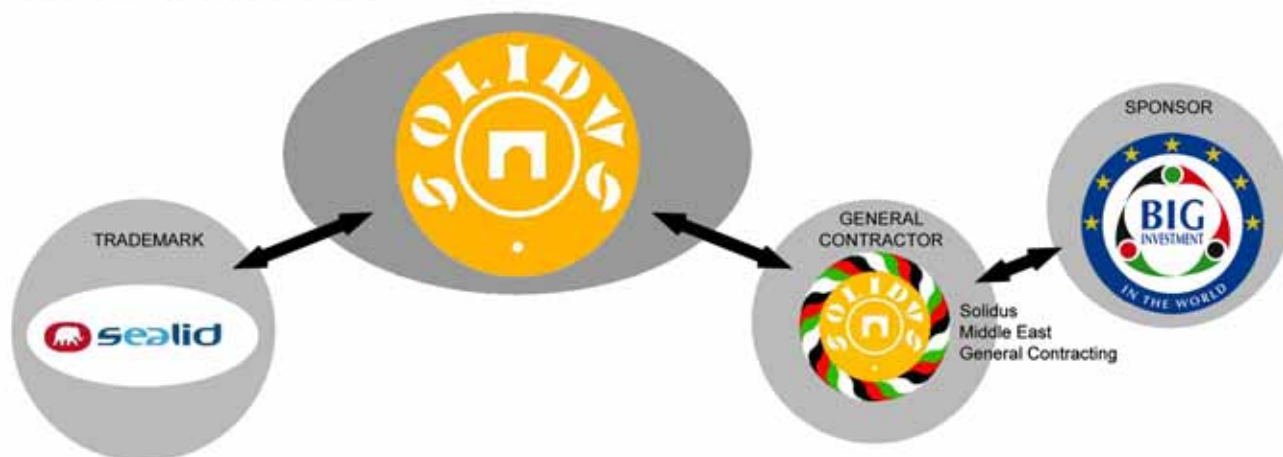


Tel.: +39.06.572.505.54 Fax: +39.06.571.392.80  
segreteria@solidusroma.it [www.solidusroma.com](http://www.solidusroma.com)

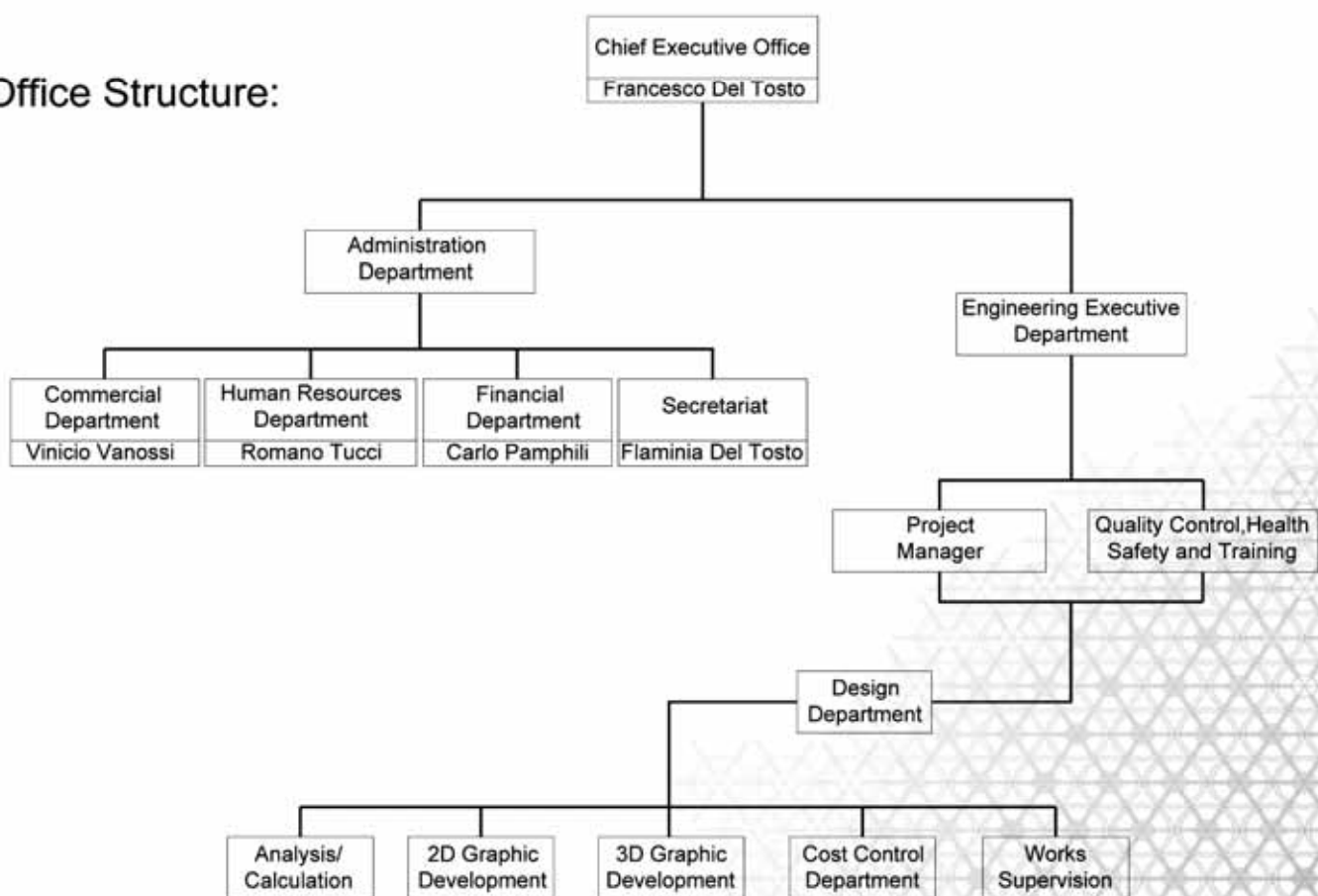


# Organisation

## Business Structure:



## Office Structure:







## Our offices



Headquarters:

Rome

Via Federico Nansen n° 68  
00154 Rome, Italy

Tel: +39 06 572 505 54

Fax: +39 06 571 392 80

Milan - Abu Dhabi - Dubai



**Solidus**



Tel.: +39.06.572.505.54 Fax: +39.06.571.392.80  
segreteria@solidusroma.it [www.solidusroma.com](http://www.solidusroma.com)

# Areas of expertise



**Bridges & Viaducts**



**Oil & Gas**



**Harbours & Docks**



**Hydraulic Structures**



**Tunnels**



**Inspection & Rehabilitation**



**Patents & Research**

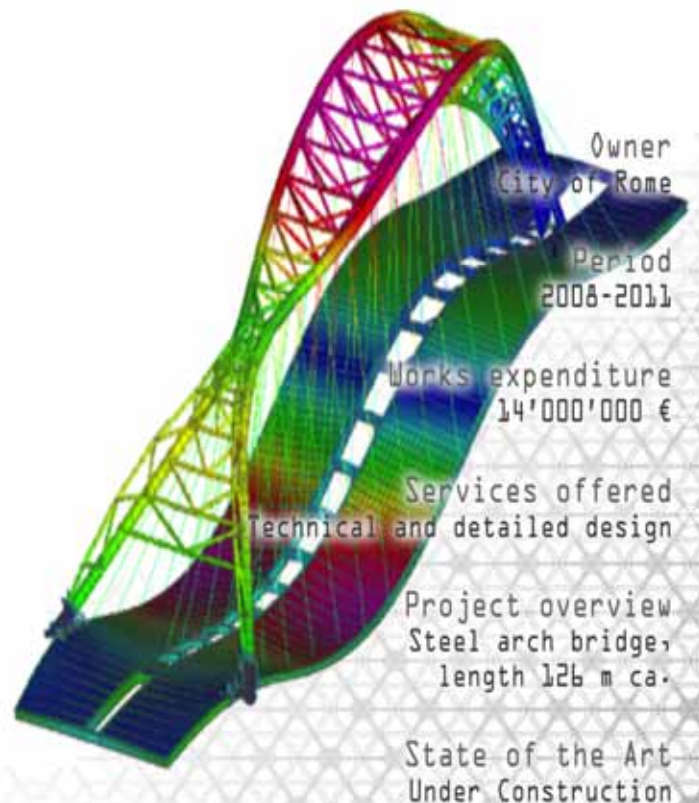
***Solidus***



Tel.: +39.06.572.505.54 Fax: +39.06.571.392.80  
segreteria@solidusroma.it [www.solidusroma.com](http://www.solidusroma.com)



## Ostiense Railway Overpass Rome, Italy





## Floating Bridge 1 Piacenza, Italy



Owner  
ANAS s.p.a.

Period  
2009-2011

Works expenditure  
6'000'000 €

Services offered  
Turnkey product and management

Project overview  
Steel floating bridge with wood deck. Under extreme urgency, the structure was executed in a 3-month time lapse and management was undertaken until dismantlement length 185 m

State of the Art  
Complete





# Bridges & Viaducts

## Floating Bridge 2 Piacenza, Italy



Owner  
ANAS s.p.a.

Period  
2009-2011

Works expenditure  
3'000'000 €

Services offered  
Turnkey product and management

### Project overview

Steel floating bridge with wood deck. Under extreme urgency, the structure was executed in a 3-month time lapse and management was undertaken until dismantlement length 90 m

State of the Art  
Complete



**Solidus**



Tel.: +39.06.572.505.54 Fax: +39.06.571.392.80  
segreteria@solidusroma.it [www.solidusroma.com](http://www.solidusroma.com)



# Bridges & Viaducts



## Steel Beam Bridge Cernavoda, Romania



Owner  
Romanian National Company of  
Motorways and National Roads

Period  
2008-2011

Works expenditure  
8'000'000 €

Services offered  
Detailed design and works supervision

Project overview  
Rehabilitation works for Bridge and deck  
replacement of the viaducts  
over the Cernavoda Waterway, on DN 22C  
length 180 + 250 + 130 m

State of the Art  
Under construction

**Solidus**



Tel.: +39.06.572.505.54 Fax: +39.06.571.392.80  
segreteria@solidusroma.it [www.solidusroma.com](http://www.solidusroma.com)



# Bridges & Viaducts

## Stay-Cable Bridge Rome, Italy

Owner  
ANAS s.p.a.

Period  
2004

Works expenditure  
3'000'000 €

Services offered  
Technical and detailed design

Project overview  
Stay-Cable bridge with concrete-steel deck  
length 40 m

State of the Art  
Complete



**Solidus**



Tel.: +39.06.572.505.54 Fax: +39.06.571.392.80  
segreteria@solidusroma.it [www.solidusroma.com](http://www.solidusroma.com)



## Arch Bridge and Viaducts Rome, Italy



Owner  
City of Rome

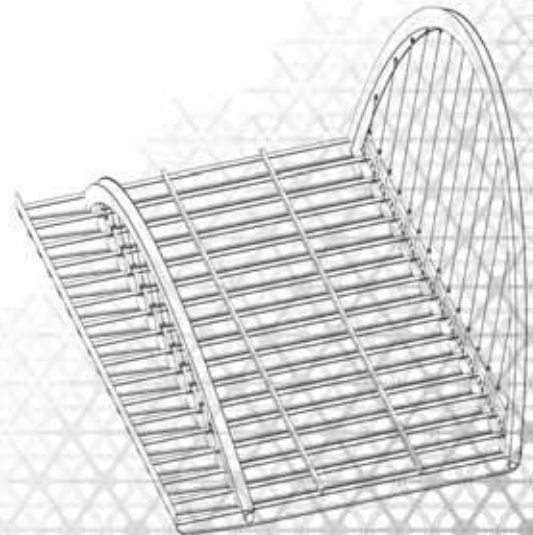
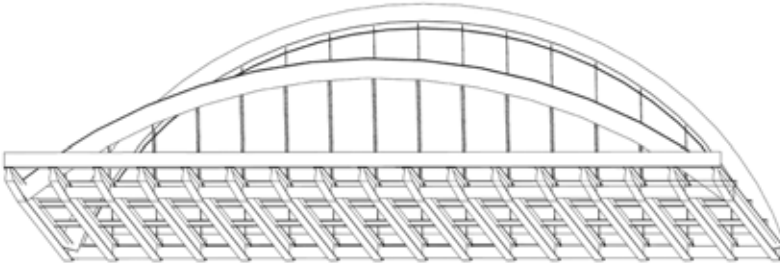
Period  
2007-2011

Works expenditure  
6'000'000 €

Services offered  
Technical and detailed design

Project overview  
Asymmetric steel double arch,  
steel-concrete deck  
length 25 + 230 m

State of the Art  
Under construction





## Navy Jetty Augusta (Sicily), Italy



Owner  
Italian Navy

Period  
1996-1999

Works expenditure  
13'000'000 €

Services offered  
Feasibility studies, preliminary and technical design

Project overview  
Reticular steel jetty structure  
supporting oil pipelines  
length 400 m



State of the Art  
Complete





## Marine Dock Trapani, Italy

Owner  
Port Authority of Trapani

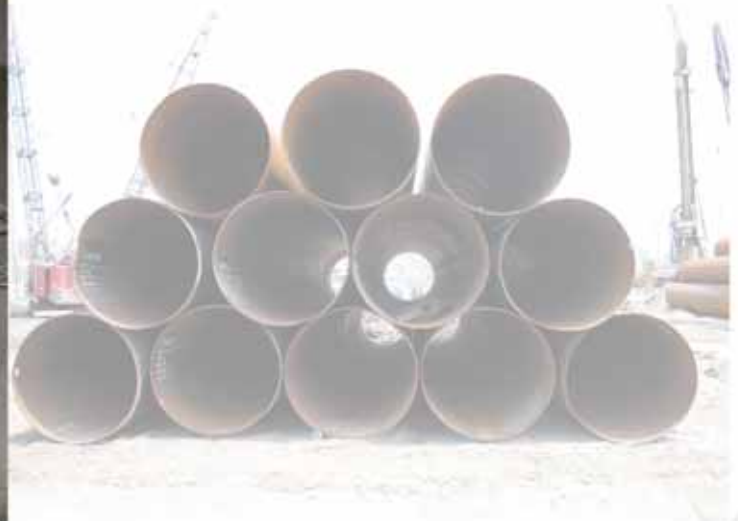
Period  
2005

Works expenditure  
15'000'000 €

Services offered  
Technical and detailed design

Project overview  
New dock and defense works

State of the Art  
Complete







**Marine Dock  
Gioia Tauro, Italy**



Owner  
Port Authority of Gioia Tauro

Period  
2003

Works expenditure  
20'000'000 €

Services offered  
Detailed design

Project overview  
Realization of a deep sea wharf in the  
Eastern Dockyard

State of the Art  
Complete





## Cavo Docks Elba Isle, Italy



Owner  
Port Authority of Piombino

Period  
2003

Works expenditure  
13'000'000 €

Services offered  
Feasibility studies, preliminary and technical design

Project overview  
Retetrofitting works and adaptation of an existing pier

State of the Art  
Complete

pall. #1000  
h. var.  
n. pall. 34

lamierino in acciaio  
sp. 6mm  
h. var.





## New Port of Ventotene Ventotene Island, Italy

Owner  
Local Port Authority

Period  
1992

Works expenditure  
15'000'000 €

Services offered  
Technical and detailed design

Project overview  
Realization of new floating concrete docks  
and breakwater walls

State of the Art  
Complete





# Hydraulic Structures

## Pool Pumps for Cooling Systems Naples, Italy



Owner  
Port Authority of Naples

Period  
2007-2011

Works expenditure  
11'000'000 €

Services offered  
Technical and detailed design

Project overview  
Sheet pile structured ducts, inlet works,  
and pool pumps for the Oriental Docks

State of the Art  
Under construction



**Solidus**



Tel.: +39.06.572.505.54 Fax: +39.06.571.392.80  
segreteria@solidusroma.it [www.solidusroma.com](http://www.solidusroma.com)



## San Giovanni Tunnel Reggio Calabria, Italy



Owner  
ANAS s.p.a.

Period  
2007-2011

Works expenditure  
95'000'000 €

Services offered  
Technical design, consultancies

Project overview  
Retro-fitting and adaptation works for the  
highway that links Salerno  
and Reggio-Calabria

State of the Art  
Under Construction





## Bridge Rehabilitation Design Constanta Region, Romania



Owner  
Romanian National Company of  
Motorways and National Roads

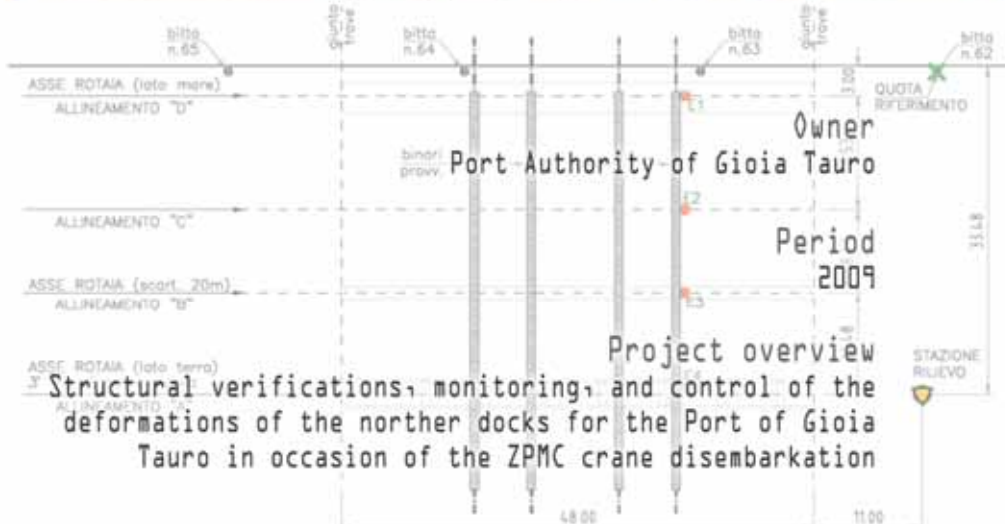
Period  
2008-2011

Project overview  
Inspection and rehabilitation works  
for 10 bridges and viaducts in the  
Constanta Region of Romania





## Marine Dock Gioia Tauro, Italy











REPLACEMENT OF ALL SUPPORT STRUCTURES AND ALL CORRODED METALLIC PARTS

REPLACEMENT OF ALL SUPPORT STRUCTURES AND ALL CORRODED METALLIC PARTS

Owner  
Agip Oil Company HELIPAD

Period  
2003

Project overview  
· Inspection of the Brass oil platform

REPLACEMENT OF ALL CORRODED AND DAMAGED HANDRAILS, UNIFORMS AND SUPPORTS

LIVING & CONTROL DECK

COMPLETE REPAIRS AND REPAIRS OF ALL METALLIC STRUCTURES TO THE PLATFORM

## Oil Platform Nigeria



OPENDECK







## School Building Ariccia, Italy



Owner  
CGIL

Period  
2007

Project overview  
Restoring and retro-fitting of structure and electric  
network for school-building complex







## Navy Arsenal Dock Rehabilitation Works Taranto, Italy

Owner  
Ministry of Defense

Period  
2010-2011

Project overview  
Rehabilitation works and strengthening of  
the docks and pertaining accessories  
length 3 km



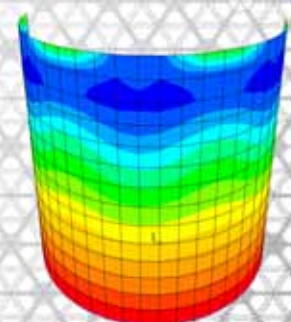
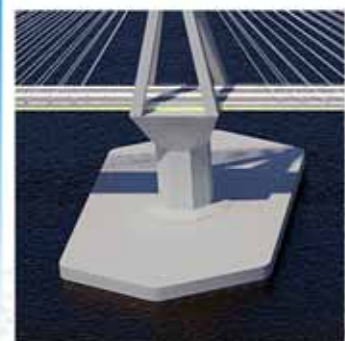
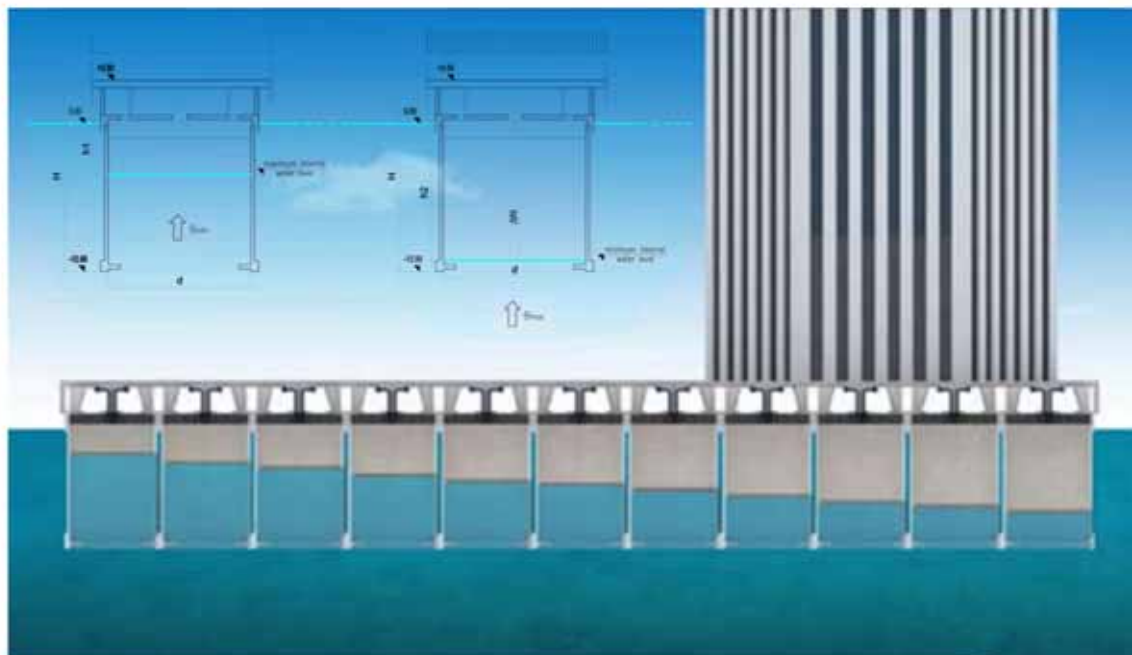
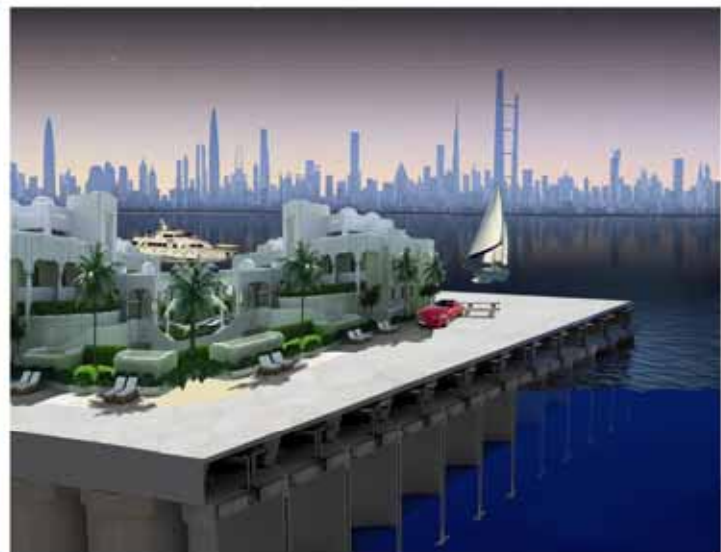
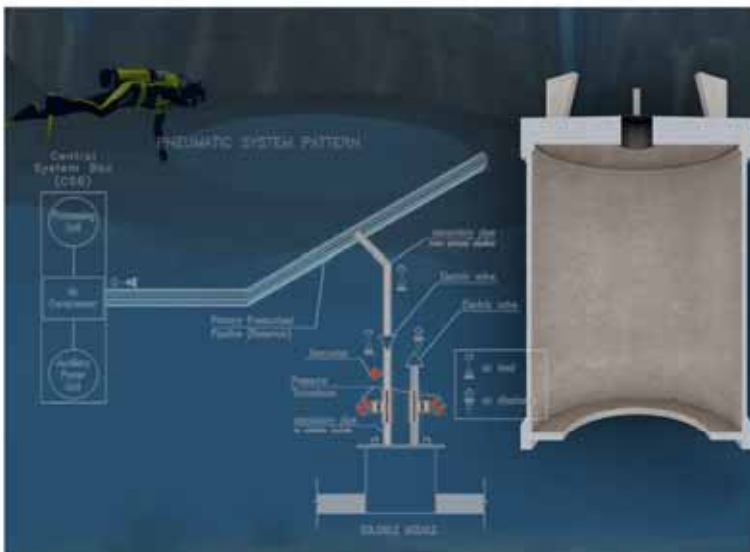


**Solidisle**  
**Modular Floating Structure**

Solidisle is a variable surface area modular FLOATING PLATFORM, which has the ability to self-establish itself thanks to an advanced advanced electronic control system

**Solidisle**  
**Modular Floating Structure**

Solidisle is a variable surface area modular FLOATING PLATFORM, which has the ability to self-establish itself thanks to an advanced advanced electronic control system


**sealid®**  
 tecnologia modulare sull'acqua | moduli
**sealid®**  
 tecnologia modulare sull'acqua | moduli

***Solidus***



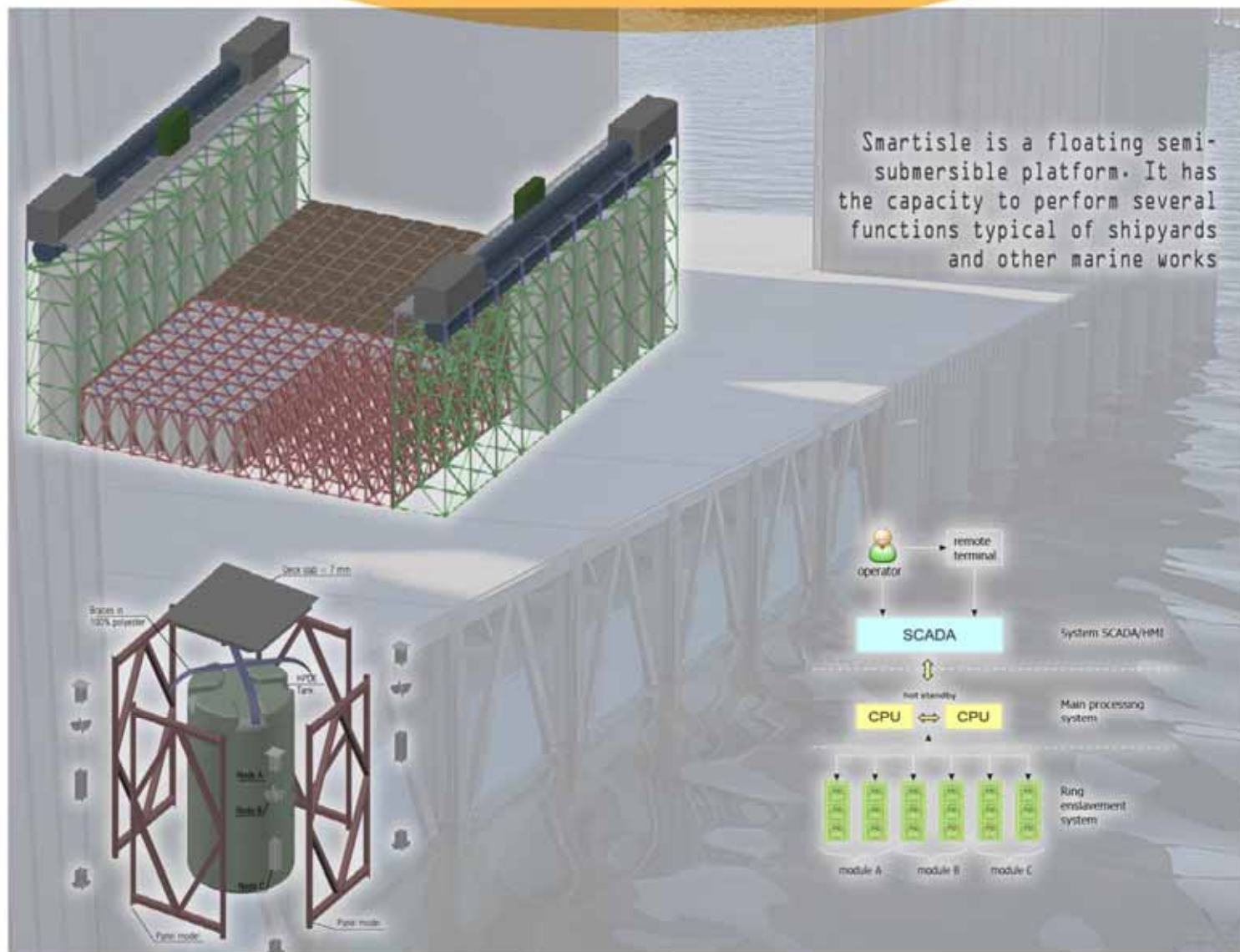
Tel.: +39.06.572.505.54 Fax: +39.06.571.392.80  
segreteria@solidusroma.it [www.solidusroma.com](http://www.solidusroma.com)

Tel.: +39.06.572.505.54 Fax: +39.06.571.392.80  
segreteria@solidusroma.it [www.solidusroma.com](http://www.solidusroma.com)

Tel.: +39.06.572.505.54 Fax: +39.06.571.392.80  
segreteria@solidusroma.it [www.solidusroma.com](http://www.solidusroma.com)



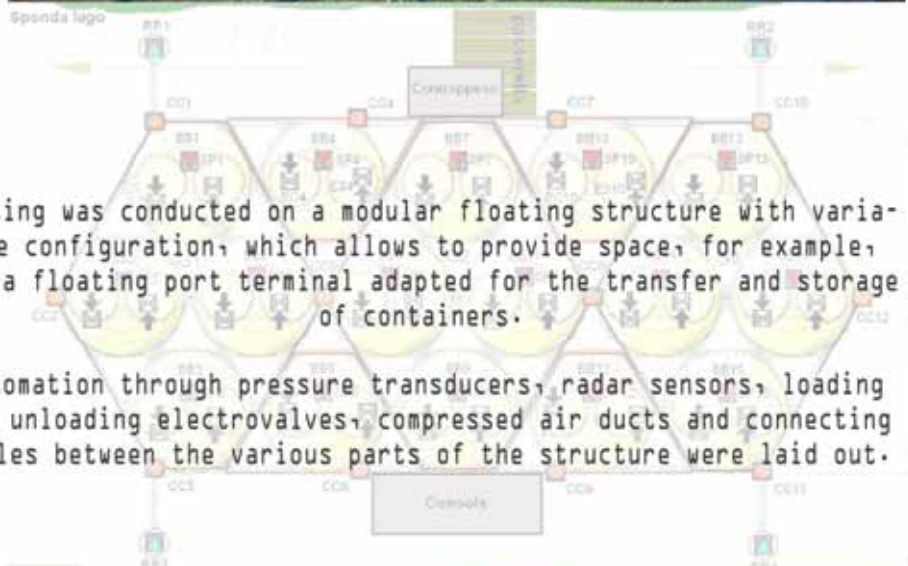
## Smartisle Floating Dry-dock



 **sealid**<sup>®</sup>  
tecnologia modulare sull'acqua | modular water technology



## Active Floating Platform



Testing was conducted on a modular floating structure with variable configuration, which allows to provide space, for example, for a floating port terminal adapted for the transfer and storage of containers.

Automation through pressure transducers, radar sensors, loading and unloading electrovalves, compressed air ducts and connecting cables between the various parts of the structure were laid out.





# Certifications, Awards and Press Release



"Best Infrastructural Project Award", Real Estate Awards, Milan, 2010



**Solidus**



Tel.: +39.06.572.505.54 Fax: +39.06.571.392.80  
 segreteria@solidusroma.it www.solidusroma.com

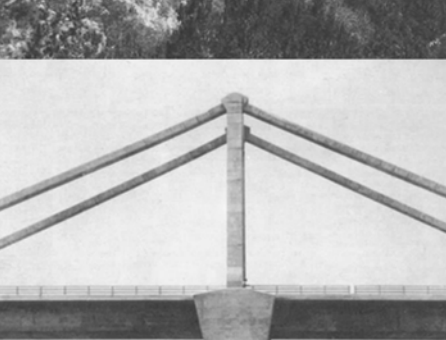


*Bridge over the Wadi-Kuf, Libya, '65-'71*

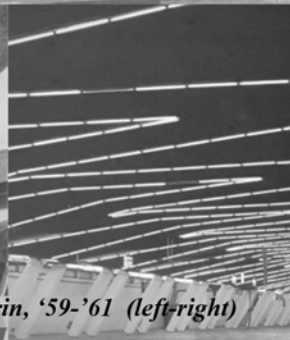
*Alitalia Hangars at Fiumicino Airport  
Rome, Italy, '61-'70*

# *A few of R. Tucci's most acclaimed works as project manager in R. Morandi's staff ...*

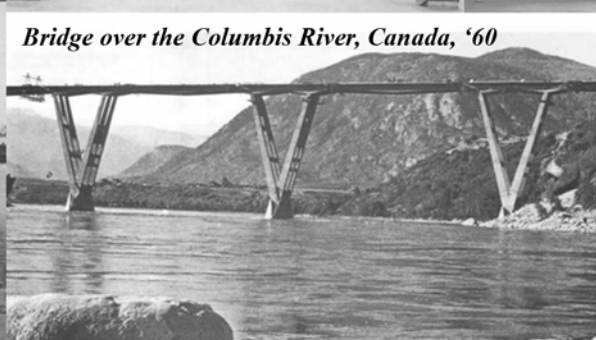
*Favazzina Overpass, Italy, '70-'72*



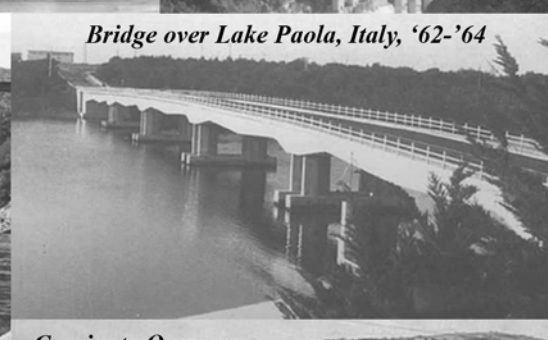
*Turin Expo Building Turin, '59-'61 (left-right)*



*Bridge over the Magdalena River  
Barranquilla, Colombia, '69-'72*



*Bridge over the Columbis River, Canada, '60*



*Bridge over Lake Paola, Italy, '62-'64*



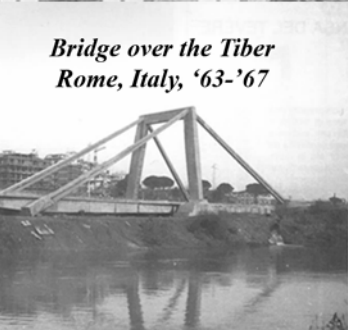
*"Scirò" Overpass  
Italy, '66-'68*



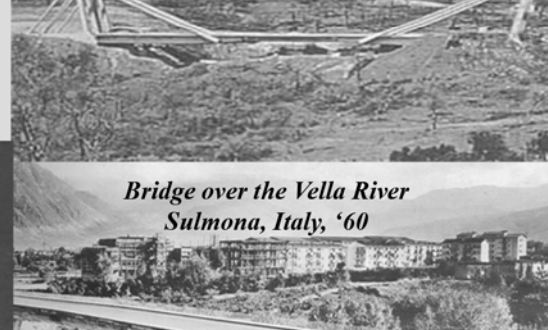
*"Fiumarella" Bridge, Catanzaro, Italy, '60-'61*



*Carpineto Overpass  
Potenza, Italy, '71-'74*



*Bridge over the Tiber  
Rome, Italy, '63-'67*



*Bridge over the Vella River  
Sulmona, Italy, '60*



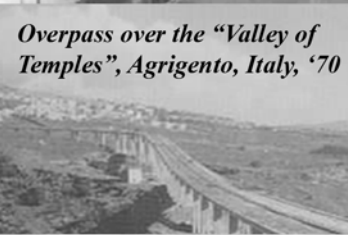
*Fontanarossa Airport, Catania  
Italy, '70-'78*



*Sanctuary (above and below)  
Syracuse, Italy, '84-'89*



*F.A.T.A. Building, Turin, Italy, '76-'77  
(design by arch. Oscar Niemeyer)*



*Overpass over the "Valley of  
Temples", Agrigento, Italy, '70*



*Great Water Tanks  
Nigeria, '84-'89*



*Bausan Pier  
Naples, Italy '68-'72*



*F1 Autodrome Control  
Tower, Imola, Italy, '84-'85*

*Corviale Building, Rome, Italy, '77*



*Overpass  
Syracuse, Italy '84-'89*





***Solidus***

**Solidus s.r.l.** Via F. Nansen, 68 - 00154 Rome, Italy P. IVA / C.F. 06537891001  
Tel.: +39.06.572.505.54 Fax: +39.06.571.392.80  
E-mail: [segreteria@solidusroma.it](mailto:segreteria@solidusroma.it)  
[www.solidusroma.com](http://www.solidusroma.com)

